

RAPIDE (120)

# Sweet Georgia Brown

4/4 (6)

E7    "    "    "    A7    "    "    "

D7    "    "    "    G    "    B7    "

E7    "    "    "    A7    "    "    "

E <sub>M</sub> 7	B7	E <sub>M</sub> 7	B7	G7 / G <sup>b</sup> 7	F7 / E7	A <sub>M</sub> 7 / D7	G6
------------------	----	------------------	----	-----------------------	---------	-----------------------	----

Grilles : Thierry Bornefill

4/4 (Ab)

F7    "    "    "    B<sup>b</sup>7    "    "    "

E<sup>b</sup>7    "    "    "    A<sup>b</sup>    "    C7    "

F7    "    "    "    B<sup>b</sup>7    "    "    "

F <sub>M</sub> 7	C7	F <sub>M</sub> 7	C7	G <sup>#</sup> 7 / G7	G <sup>b</sup> 7 / F7	B <sup>b</sup> <sub>M</sub> 7 / E <sup>b</sup> 7	A <sup>b</sup> 6
------------------	----	------------------	----	-----------------------	-----------------------	--	------------------

tw FA 2<sup>nd</sup> record  
D7

# SWEET GEORGIA BROWN

BRIGHTLY ♩ = 160

BEN BERNIE,  
KENNETH CASEY & MACEO PINKARD

F7

No gal made \_\_\_ has got a shade \_\_\_ on Sweet Geor-gia Brown, \_\_\_

Bb7

two left feet, \_\_\_ but oh, so neat, \_\_\_ has Sweet Geor-gia Brown, \_\_\_

Eb7

they all sigh \_\_\_ and wan-na die \_\_\_ for Sweet Geor-gia Brown, \_\_\_ I'll tell you just

AbΔ Eb7 Ab GM7b5 C9+

why, \_\_\_ you know \_\_\_ I don't lie, not much!

F7

It's been said \_\_\_ she knocks 'em dead, \_\_\_ when she lands in town; \_\_\_  
All those tips \_\_\_ the por-ter slips \_\_\_ to Sweet Geor-gia Brown; \_\_\_

Bb7

since she came, \_\_\_ why it's a shame \_\_\_ how she cools 'em down, \_\_\_  
they buy clothes \_\_\_ at fash-ion shows \_\_\_ with one dol-lar down, \_\_\_

Fm GM7b5 C7+ Fm

fel-lers, \_\_\_ she can't get \_\_\_ are fel-lers, \_\_\_  
oh, boy, \_\_\_ tip your hats, \_\_\_ oh, joy, \_\_\_

GM7b5 C7+ Ab7 Gb7 F7

she ain't met, \_\_\_ Geor-gia claimed \_\_\_ her, Geor-gia named \_\_\_ her,  
she's the "cat's," \_\_\_ who's that, mis-ter? Tain't her sis-ter,

1. Bbm Eb7 Ab6 G7b9 F#7b9 2. AbΔ

Sweet Ger-gia Brown. \_\_\_

# César swing (Traditionnel)

Dm6	"	A7	"	D7(b9)	"	Gm6	"
Gm6	"	Dm6	"	E7(b9)	"	A7	"
Dm6	"	A7	"	D7(b9)	"	Gm6	"
Gm6	"	Dm6	"	E7(b9)	A7	Dm6	(A7)

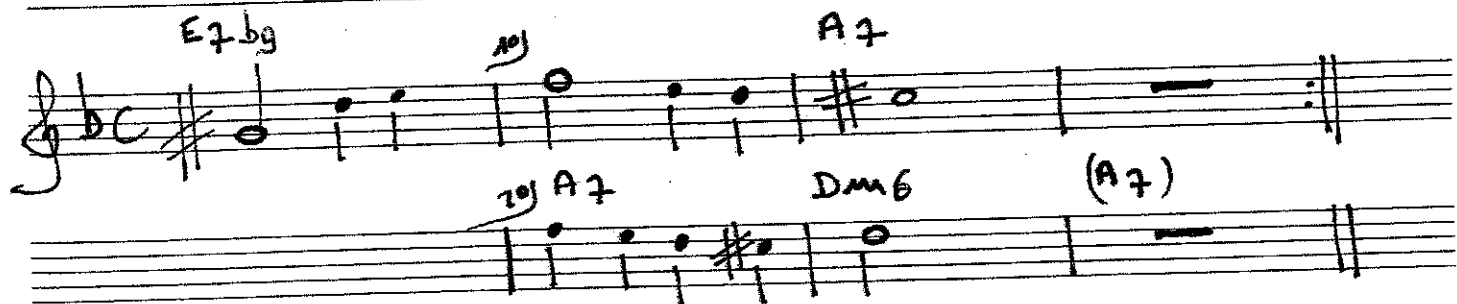
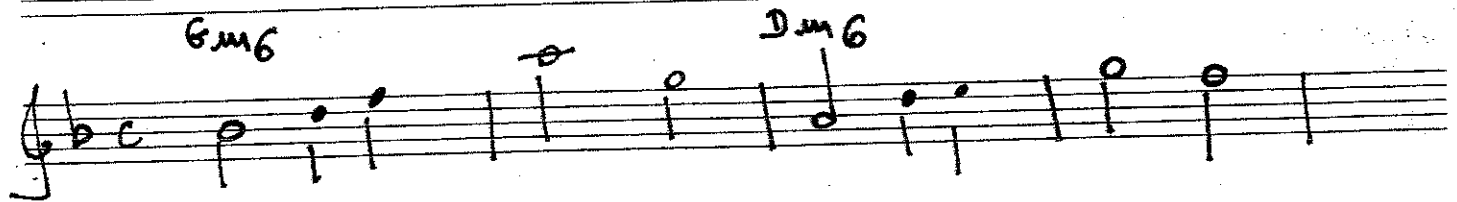
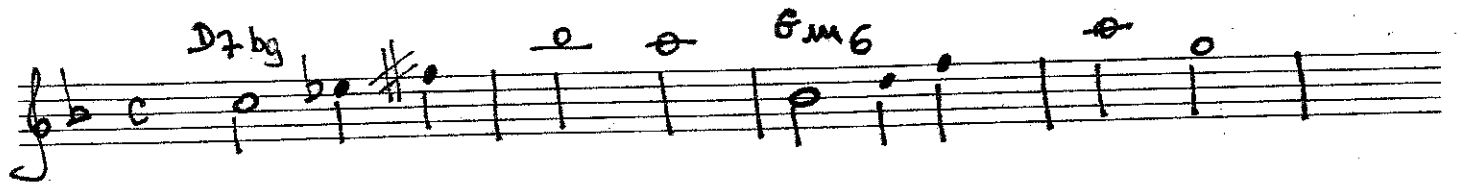
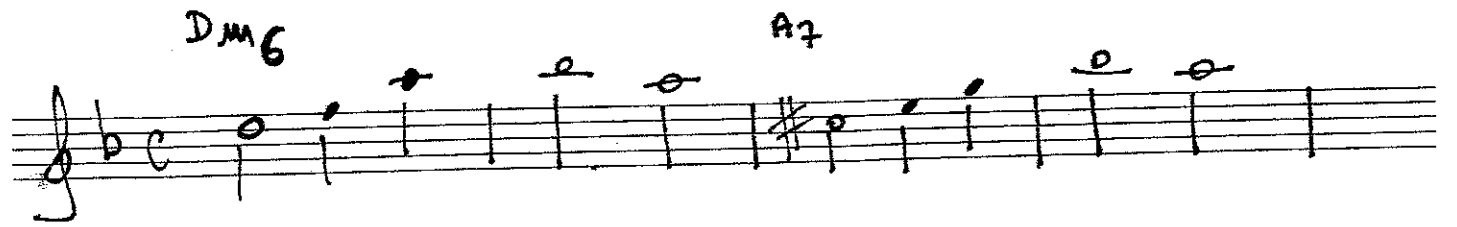
Grille proposée par Samy Dausset  
(Guitariste acoustique n°7)  
p. 56 | 57

Musique du film Les parapluies de Cherbourg

Sur morceau de jazz manouche.

# César Swing

(traditionnel tzigane)



Méloodie enregistrée par le SCHNUCKENACK REINHARDT (1969)  
QUINTET

Michel Legrand l'utilise dans Les parapluies de Berbourg.

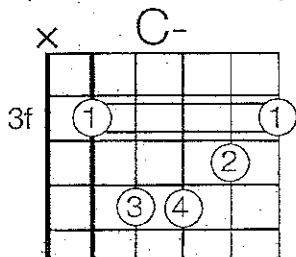
Progression harmonique classique.

# Topsy (ABCA)

## Intro

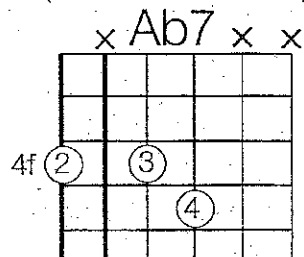
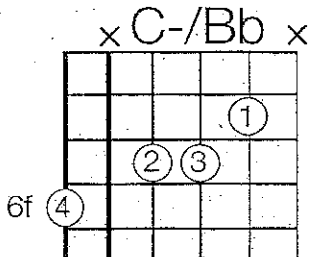
$C_m$ $C_m/B_b$	$A_b7$ $G7$	$C_m$ $C_m/B_b$	$A_b7$ $G7$				
① $C_m$ $C_m/B_b$	$A_b7$ $G7$	$C_m$ $C_m/B_b$	$A_b7$ $G7$	$C_m$ $C_m/B_b$	$A_b7$ $G7$	$C_m$	$C7$
② $F_m$ $F_m/E_b$	$D_b7$ $C7$	$F_m$ $F_m/E_b$	$D_b7$ $C7$	$C_m$ $C_m/B_b$	$A_b7$ $G7$	$C_m$	"
③ $C7$	"	$F7$	"	$B_b7$	"	$A_b7$	$G7$
④ $C_m$ $C_m/B_b$	$A_b7$ $G7$	$C_m$ $C_m/B_b$	$A_b7$ $G7$	$C_m$ $C_m/B_b$	$A_b7$ $G7$	$C_m$	$A_b7$ $G7$

(for F- use 8th fret)

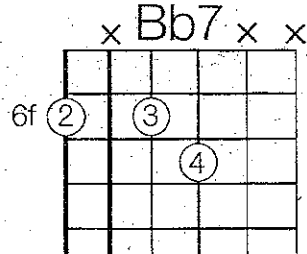
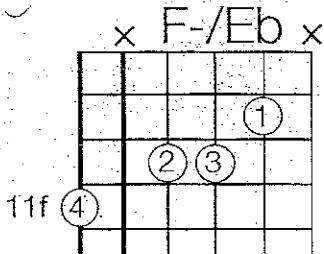
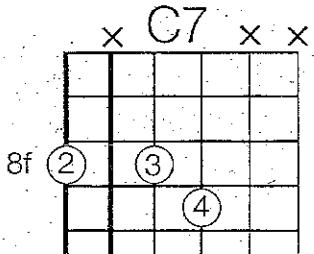


(for G7 use 3rd fret)

(for F7 use 1st fret)



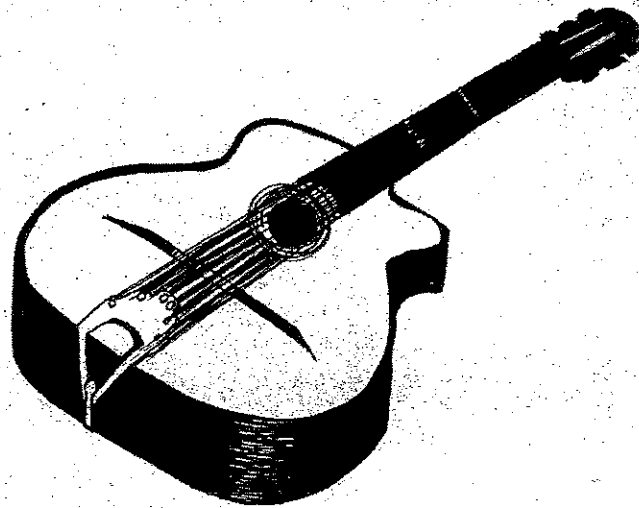
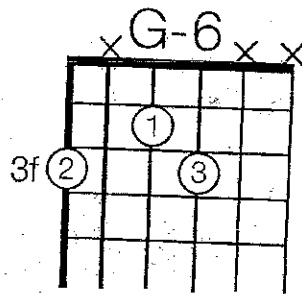
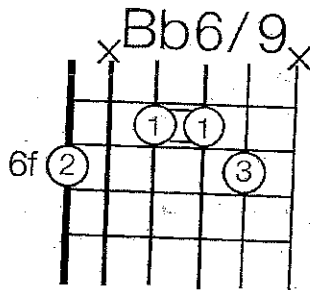
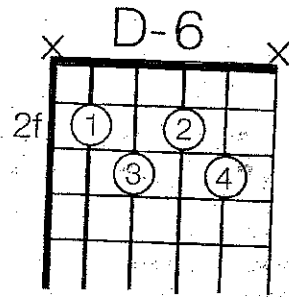
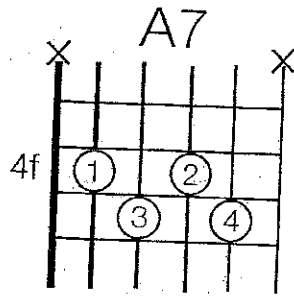
(for Db7 use 9th fret)



# Dark eyes (Les yeux noirs)

A7 || Dm6 || A7 || Bb6g ||

Gmb || Dm6 || A7 || Dm6 ||



# Minor swing

## Intro

Am6	Dm6	Am6	Dm6	Am6	Dm6
↓	↓	↓	↓	↓	↓

1 LLL <LLL  
 BASS BREAK  
 E7

Descente à  
 la basse

## Solo (CHORUS)

Am6		Dm6		E7		Am6	
Dm6		Am6		Bb7	E7	Am6	E7
(Dm7)	(G13b9)	(CΔ)	(FΔ)	(Bm7b5)			

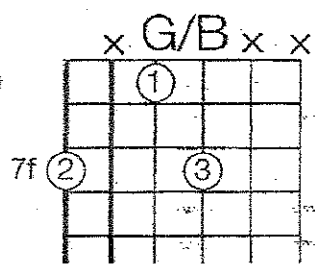
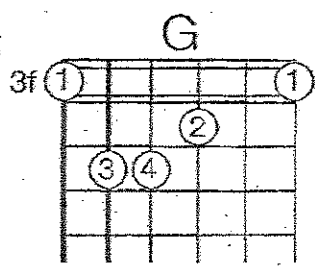
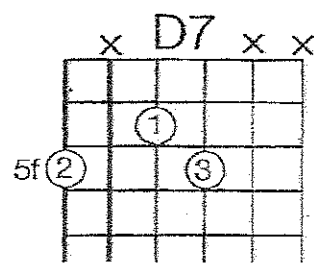
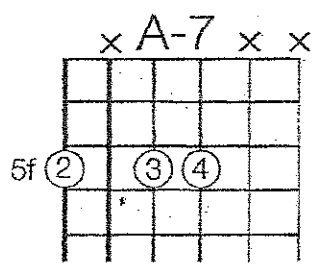
## Guitar

Am6		Dm6		E7	
Am6		Dm6		E7	

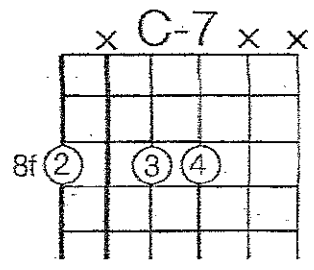
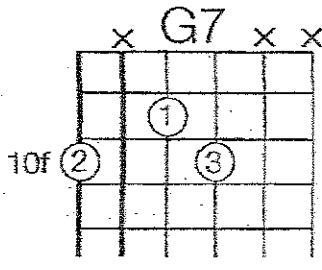
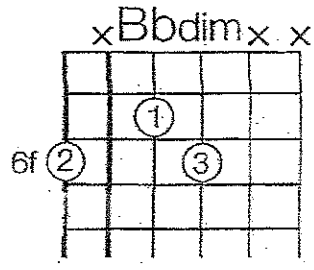
1 LLL <LLL  
 Am6  
 BASS BREAK  
 1 <<< <<< 1  
 E7 Am6

# Sweet Sue

Am7	D7	Am7	D7	G	"	"	<del>G/B</del> Bb°
Am7	D7	Am7	D7	G	"	"	"
G7	F#7	F7	E7	Am7	"	Cm7	F7
Am7	D7	Am7	D7	G	"	"	<del>G/B</del> Bb°



(for F#7, F7 & E7 use 9th, 8th & 7th frets)





# SWEET SUE

EV-ERY STAR A-SOVE KNOWS THE ONE I LOVE SWEET

6 SUE JUST YOU AND THE

10 MOON UP HIGH KNOWS THE REA-SON WHY SWEET

14 SUE IT'S YOU NO - ONE

18 ELSE IT SEEMS EV - ER SHARES MY DREAMS AND WITH -

22 BUT YOU DEAR I DON'T KNOW WHAT I'D DO. IN THIS

26 HEART OF MINE YOU LIVE ALL THE TIME SWEET

30 SUE OVER YOU.

# Les feuilles mortes.

Joseph Kosma

INTRO

Gm7	Am7 <sup>5b</sup> D7 <sup>9b</sup>	Gm7	D7				
-----	---------------------------------------	-----	----	--	--	--	--

• Cm7	F9 F7 <sup>9b</sup>	Bb7M	Eb7M	Am7 <sup>5b</sup>	D7 <sup>9b</sup> D7	Gm	Gm7+ Gm6
Cm7	F9 F7 <sup>9b</sup>	Bb7M	Eb7M	Am7 <sup>5b</sup>	D7 <sup>9b</sup> D7	Gm7	Gm7 Gm7
Am7 <sup>5b</sup>	D7 <sup>9b</sup> D7	Gm7	Gm7 G7	Cm7	F9 F7 <sup>9b</sup>	Bb7M	Eb7M
Am7 <sup>5b</sup>	D7 <sup>9b</sup> D7	Gm7 Gb7	Fm7 E7 <sup>9+</sup>	Eb7M	D7 <sup>9+</sup> D7 <sup>9b</sup>	Gm7	— :

Gm7, Am7<sup>5b</sup>, D7<sup>9b</sup>, D7, Cm7, F9, F7<sup>9b</sup>,  
 Bb7M, Eb7M, Gm, Gm7+, Gm7, Gm6, Gm11,  
 G7, Gb7, Fm7, E7<sup>9+</sup>, D7<sup>9+</sup>