

(They Long To Be) Close To You

Words by Hal David
Music by Burt Bacharach

Moderato

The piano introduction consists of two staves in 4/4 time. The right hand plays a series of chords and eighth notes, while the left hand provides a simple bass line. The dynamic marking is *mf*.



C9

F#m7 (susB)

B

Why do birds why sud - den - ly ap - pear ev - 'ry
all the boys in town fol - low

Bm7

Em7

Em

C

Cma9

time you you are all a near? round? } Just like me _

C Cma9 Gma9 Bm7

they long to be close to you. _____ Why do

C9 F# m7 (susB) B Bm7

stars fall down from the sky ev-'ry time you walk by?_

Em7 Em C Cma9 C Cma9

_____ Just like me _____ they long to be

Gma7



Bm7



G7



C



close to

you.

On the day that you were born the

Bm7



an - gels got to - ge - ther — And de - ci - ded to cre - ate a dream come

E9



Cma9



C6



true,

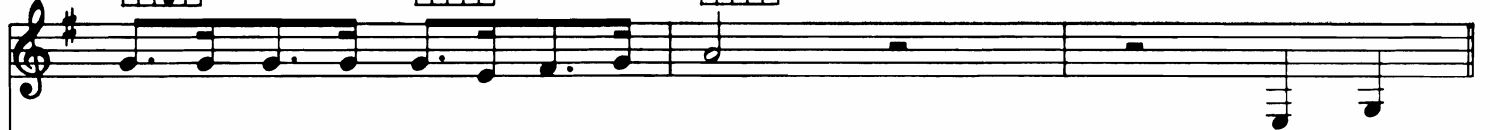
So they

sprink-led moon - dust in your hair — Of

Cma9

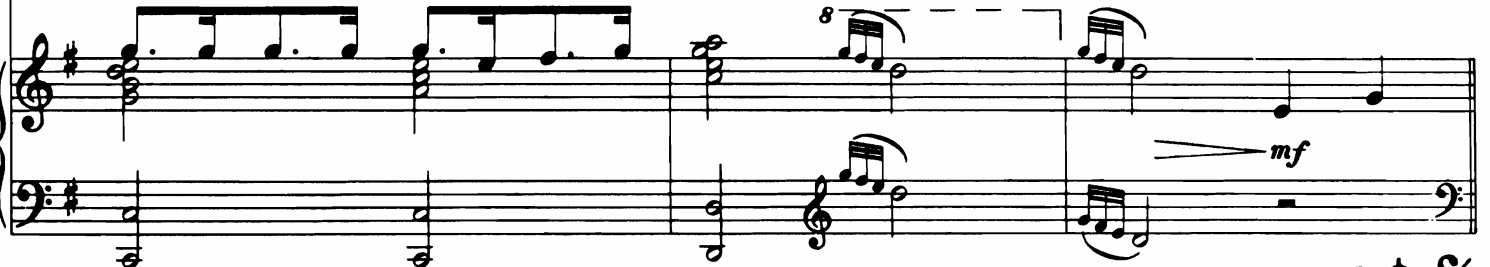
C6

D11



gold, and star-light in your eyes of blue.

That is



D.S. al

Coda

Bm7

Cma9



close to

you.

Ah



Gma7

G6



repeat and fade



Close to

you.

