

QUE SERÁ SERÁ

G7M D₄⁷(9) Bm7 Em9

Handwritten guitar chord diagrams for G7M, D₄⁷(9), Bm7, and Em9. Each diagram shows the fretting pattern on a six-string guitar.

First musical staff in treble clef, key of D major, 3/4 time. It begins with a repeat sign and contains a sequence of notes: D4, E4, F#4, G4, A4, B4, C5, B4, A4, G4, F#4, E4, D4.

Bm7 Bb7 Am11 Ab7^{b5}

Handwritten guitar chord diagrams for Bm7, Bb7, Am11, and Ab7^{b5}.

Second musical staff in treble clef, key of D major, 3/4 time. It contains notes: B4, A4, G4, F#4, E4, D4, with a slur over the last four notes.

Am7 D9 Am6 D7

Handwritten guitar chord diagrams for Am7, D9, Am6, and D7.

Third musical staff in treble clef, key of D major, 3/4 time. It contains notes: D4, E4, F#4, G4, A4, B4, C5, B4, A4, G4, F#4, E4. An accent mark is placed over the G4 note.

Am11 D₄⁷(9) G7M B^ob13

Handwritten guitar chord diagrams for Am11, D₄⁷(9), G7M, and B^ob13.

Fourth musical staff in treble clef, key of D major, 3/4 time. It contains notes: D4, E4, F#4, G4, A4, B4, C5, B4, A4, G4, F#4, E4. A repeat sign is placed after the eighth note.

C7M C⁶₉ C/A D7^{b9}

Handwritten guitar chord diagrams for C7M, C⁶₉, C/A, and D7^{b9}.

Fifth musical staff in treble clef, key of D major, 3/4 time. It contains notes: D4, E4, F#4, G4, A4, B4, C5, B4, A4, G4, F#4, E4. An accent mark is placed over the G4 note.

G7M



G6



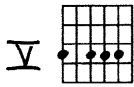
E5+



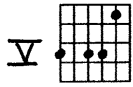
B°



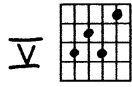
Am7



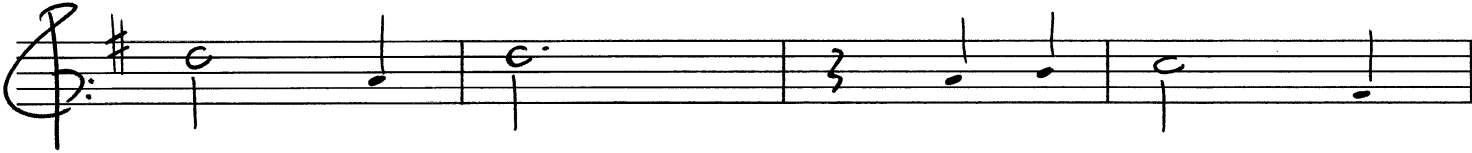
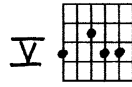
Am11



D7



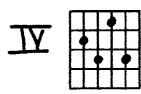
Am6



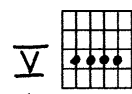
G7M



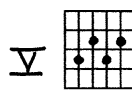
C#°



D7(9)

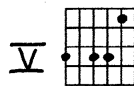


D7b9

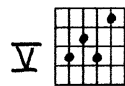


CODA

Am11



D7



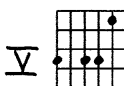
G7M



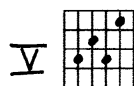
Bm7



Am11



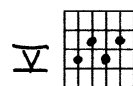
D7



G7M



D7b9



G6

