

SOLO VOICE

# PAPER DOLL

ARRANGED BY NICK GREER

1-4 **4** **FOXTROT**  $\text{♩} = 73$  5 6 7 8

I'VE BEEN AW-FUL SAD AND BLUE. THINK-ING OF THE LOVES I'VE HAD. BUT

9 10 11 12 13 14

NOW'S MY TIME TO SMILE 'CAUSE I'VE DE-CIDE-ED I'LL GO OUT AND...

**A** 15 16 17 18 19-21 **3** 22

BUY A PA-PER DOLL THAT I CAN CALL MY OWN AND THEN THOSE

23 24 25 26 27

FLIRT-Y, FLIRT-Y GUYS WITH THOSE FLIRT-Y, FLIRT-Y EYES WILL HAVE TO FLIRT WITH

**B** 28 29 30 31-32 **2** 33 34

DOL-LIES THAT ARE REAL. OO HOW SWEET IT IS.

35-37 **3** 38 39 40 41

I'D RA-THER HAVE A PAP-ER DOLL TO CALL MY OWN

42 43 44 45 46

— THAN HAVE A FICK-LE MIND-ED REAL LIVE GIRL.

2

# SOLO VOICE

C

47

48

49



A LIT-TLE CUT-OUT JUST AS CUTE AS CAN BE\_\_

I'LL PUT THAT DOL-LIE RIGHT

50

51

52



\_\_ ON MY KNEE\_\_

I KNOW THAT SHE'LL BE WAIT-ING

PA - TIENT-LY\_\_

THAT'S

53

54

55

56

57



WHY I KNOW A PA-PER DOLL'S FOR ME.

WHEN WE GO OUT

AND WHEN WE'RE THERE

58

59

60

61

62



AND WHEN IT'S THROUGH

'CAUSE DOL-LIE GOES FOR NO ONE, BUT MY-SELF.

D

63-69

7

70

71

72

73



I'D RA-THER HAVE\_\_

A PAP-ER DOLL\_\_

TO CALL

MY OWN

74

75

76

77



\_\_ THAN HAVE A STUB-BORN, SIL - LY,

WIL-LEY,

NIL-LEY,

FICK-LE

MIND-ED

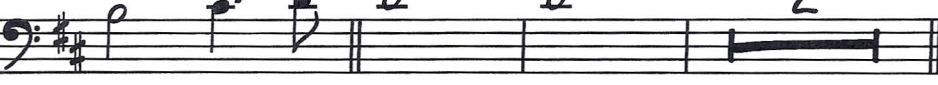
78

79

80

81-82

2



REAL LIVE GIRL\_\_\_\_\_

BACKUP VOX

# PAPER DOLL

ARRANGED BY NICK GREER

FOXTROT  $\text{♩} = 73$   
1-4

4

5-13

9

14

A musical staff in bass clef with a key signature of one sharp (F#). It contains a single whole rest that spans the entire 14-measure duration of the first system.

**A**

A 3 15

16

17

18

Musical staff with notes and lyrics for measures 15-18. Measure 15 starts with a quarter rest. The melody consists of quarter and eighth notes.

BUY A PA-PER DOLL THAT I CAN CALL MY OWN A

19

20

21

22-23

2

Musical staff with notes and lyrics for measures 19-23. Measure 22-23 contains a whole rest.

DOLL THAT OTH-ER FELL - OWS CAN - NOT STEAL.

24 A 3

25

26

A 3 27

28

29

Musical staff with notes and lyrics for measures 24-29. Measure 24 starts with a quarter rest. The melody consists of quarter and eighth notes.

YES? WILL HAVE TO FLIRT WITH DOLL-LIES THAT ARE REAL.

30

**B**

31

32

33

Musical staff with notes and lyrics for measures 30-33. Measure 30 starts with a quarter rest. The melody consists of quarter and eighth notes.

WHEN I COME HOME AT NIGHT SHE WILL BE WAIT - ING

34

35

36

37

Musical staff with notes and lyrics for measures 34-37. Measure 34 starts with a quarter rest. The melody consists of quarter and eighth notes.

SHE'LL BE THE TRU-EST DOLL IN ALL THIS WORLD.

## BACKUP VOX

*A 3*  
38 39 40 41

I'D RA-THER HAVE A PAP-ER DOLL TO CALL MY OWN

42 43 44 45 46 *A 3*

— THAN HAVE A FICK-LE MIND-ED REAL LIVE GIRL. I'M GOING-TO

47 **C** 48 49 50 51 52

BUY A PA-PER DOLL WHEN I COMEHOME THAT'S

53 54 55 56

I'M TAK-ING DOL-LIE TO THE JAM-BO REE—

WHY I KNOW A PA-PER DOLL'S FOR ME.

57 58 59

I KNOW SHE'LL GIVE HER FULL AT - TEN-TION TO ME— I'LL FOLD HER UP AND PUT HER

60 61 62

BACK ON THE SHELF— 'CAUSE DOL-LIE GOES FOR NO ONE, BUT MY - SELF. WHEN

# BACKUP VOX

**D** 63 64 65 66 67

I COME HOME AT NIGHT SHE WILL BE WAIT-ING SHE'LL BE THE TRU-EST DOLL

68 69 70 71 72

*A 3*

— IN ALL THIS WORLD. I'D RA-THER HAVE A PAP-ER DOLL TO

73 74 75 76

CALL MY OWN THAN HAVE A STUB-BORN, SIL-LY, WIL-LEY, NIL-LEY,

77 78 79 80 81-82

FICK-LE MIND-ED REAL LIVE GIRL.