

# Soul With A Capital "S"

Vocal

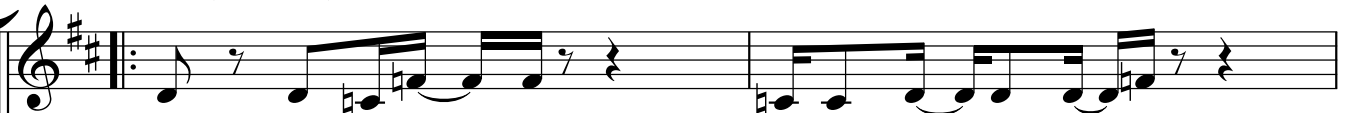
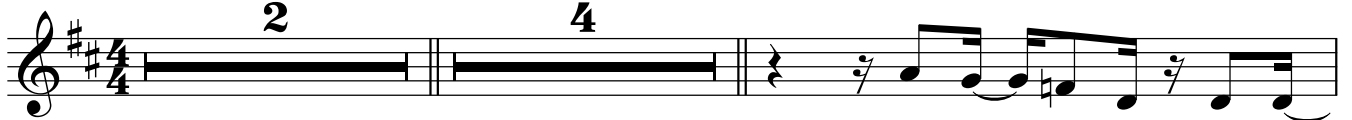
Emilio Castillo/Doc Kupka

♩ = 120

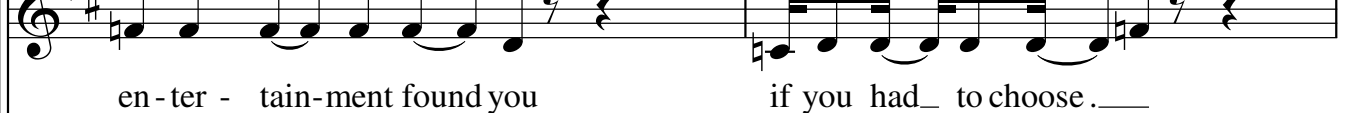
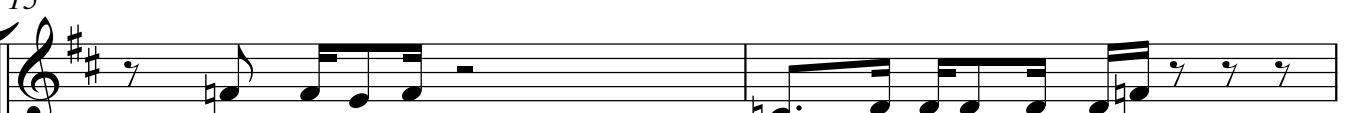
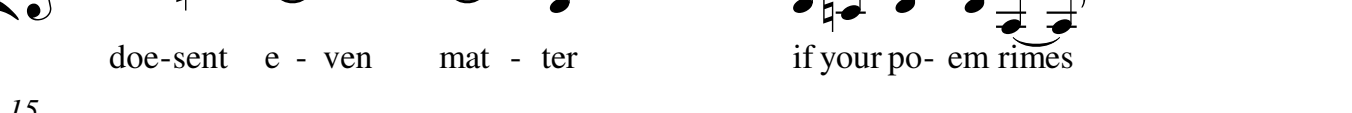
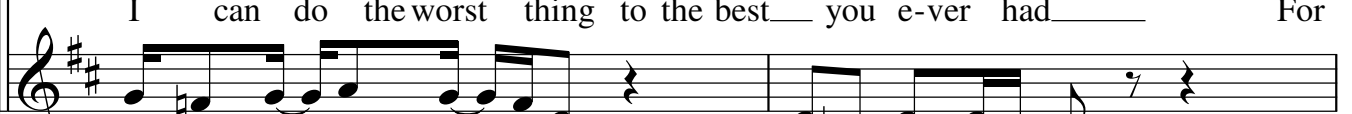
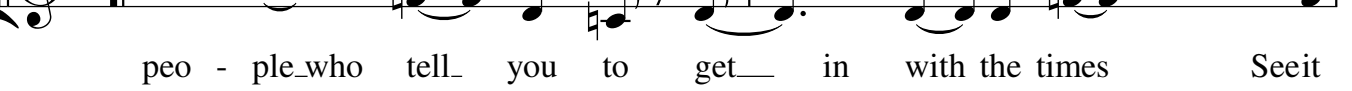
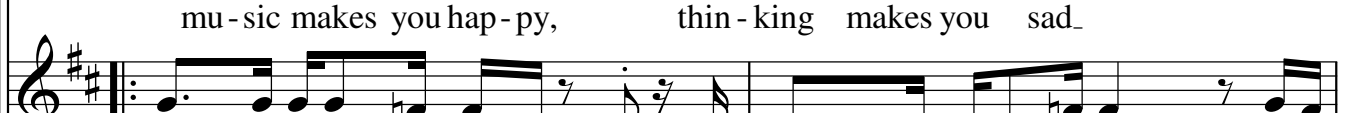
Intro

2

4



Verse (3 times)



V.S.

17

Some folks like it old and some like it new. Now  
 You and me may disagree, cause I like rhythm and blues. Now  
 some-thing that gave up every-one and there ain't no right or wrong. Yes

19

I'm not liking country and I'm not rap-pin rap. You  
 I'm not missin' disco, I'm not say-ing punk is bunk. I can  
 some rock makes you lazy, High-school will leave you flat.

21

make man swing, just say my thing no I'm talkin' to dig, my step.  
 settle for heavy metal cause I got to have that funk.  
 Fusion drives you crazy, That's no funk is where it's at.

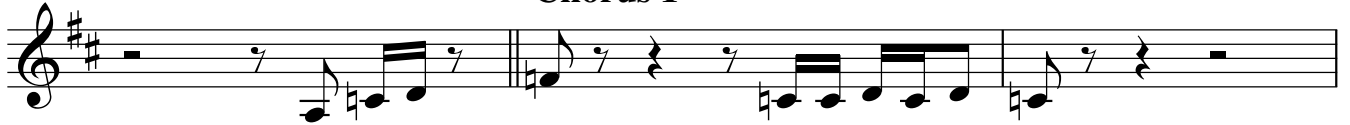
23



The on-ly thing that turns me on is where I hear a soul-ful song.

27

**Chorus 1**



Cause I like Soul with a ca-pi-tal S,

30



Soul with a ca-pi-tal S. Sweet soul mu sic,

33



that's the best. Soul with a ca-pi-tal S.

36

Musical staff for measure 36, featuring a treble clef, a key signature of two sharps, and a 4/4 time signature. The staff includes a first ending bracket with a '2' above it, a '1.2.' section, and a '3.' section. The melody consists of a quarter note G4, an eighth note A4, a quarter note B4, and a quarter note C5. This sequence repeats, followed by a quarter note B4, a quarter note A4, and a quarter note G4.

Well yeah Hey, yeah my

Oh, there's

**Chorus 2**



Soul, with a ca - pi - tal S. Don't you know that I like

42



Soul with a ca-pi-tal S. Sweet soul mu sic,

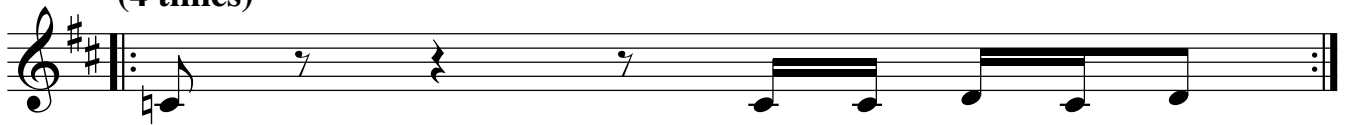
45



that's the best. Soul with a ca - pi - tal

47

(4 times)



S. with a ca - pi - tal

