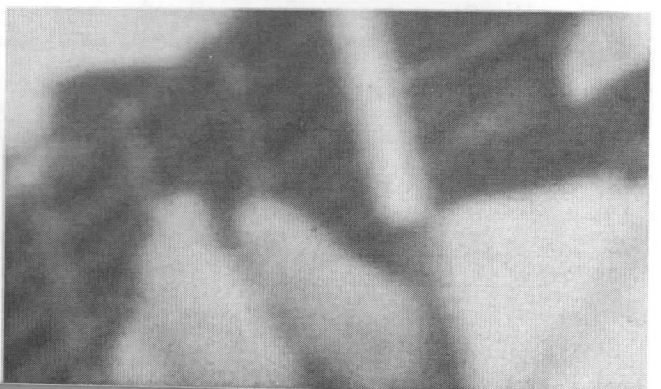
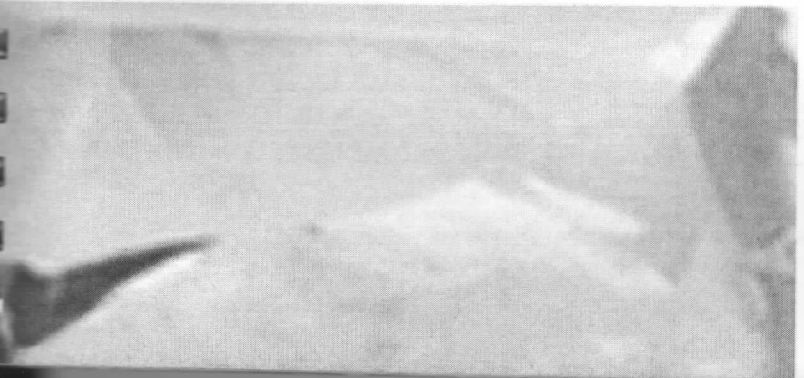


***The Presence of Jesus***  
*(David Haas)*

A reminder of how we gather together as a community to celebrate the Eucharist, this song is a call to share in Christ's presence—to find strength and peace in Him. It is the voice of a compassionate Christ calling us to a life of service to His people—a life free from fear and strengthened by His love.



# The Presence Of Jesus

Choir (SATB)  
Baritone soli

Lyrics and music DAVID HAAS  
Arrangement DAVID HAAS

Romantically

$\text{♩} = 100$

Introduction

G<sup>9</sup> Em<sup>9</sup> C<sup>9</sup> C/D Dsus<sup>4</sup>

9 G C/G G C/G

Enter Solo

A (Choir joins only on repeat)

17 G Em D/C C D/C C /G G C/G G

mp BARITONE SOLO

mp SOPRANOS & BASSES (S<sup>6</sup>)

mp ALTOS & TENORS

Enter Duet (for Verse 3)

Exit S/B

Exit A/T

Eat and drink, feed on the presence of Je - sus, the Lord.

Eat and drink, feed on the presence of Je - sus, the Lord.

Eat and drink, the presence of Je - sus, the Lord.

B

29 G D/C C D/C C

1. 2.

Come to Me, all you who la - bor and find your rest.

Come to Me, I will ne - ver for - sake you.

37 Em F D# Dsus<sup>4</sup> D Dsus<sup>4</sup> D

Come lay your bur - dens u - pon me, My yoke is ea - sy and light.

Be not a - fraid, I am with you, hol - ding you al - ways close to My heart.

C

47 G D/C C D/C C

5 BARITONE SOLO (Melody)

5 BARITONE SOLO

Come to Me, go forth and serve My peo - - - ple.

Come to Me, go forth and serve My peo - - - ple.



55 **Em** **F** **D#** **Dsus4** **D** **C#/D#** **D#**

*Enter Choir*  
I send My Spi - rit to guide you, to streng-then the wea - ry and the bro - ken.  
*Exit Solo*

I send My Spi - rit to guide you, to streng-then the wea - ry and the bro - ken.

65 **D** **A<sup>b</sup>** **Fm** **E<sup>b</sup>/D<sup>b</sup>** **D<sup>b</sup>** **E<sup>b</sup>/D<sup>b</sup>** **D<sup>b</sup>** / **A<sup>b</sup>** **A<sup>b</sup>** **D<sup>b</sup>/A<sup>b</sup>** **A<sup>b</sup>**

*mf* SOPRANOS & BASSES (8<sup>th</sup>)  
Eat and drink, feed on the pre-sence of Je - sus, the Lord.  
*Basses join bottom staff*

*mf* ALTOS & TENORS  
Eat and drink, the pre-sence of Je - sus, the Lord.  
*Altos join top staff*

77 **E** **A<sup>b</sup>** **E<sup>b</sup>/D<sup>b</sup>** **D<sup>b</sup>** **E<sup>b</sup>/D<sup>b</sup>** **D<sup>b</sup>**

*f* SOPRANOS & ALTOS  
Come to Me, live in the light of un - en - ding joy.

*f* TENORS & BASSES  
Come to Me, live in the light of un - en - ding joy.

85 **Fm** **G<sup>b</sup>** **F<sup>b</sup>** **E<sup>b</sup>sus4** **E<sup>b</sup>** **E<sup>b</sup>sus4** **E<sup>b</sup>**

*cresc.*  
I come that you may have new life, life in its full - ness and peace.  
*Altos join bottom staff*

*cresc.*  
I come that you may have new life, life in its full - ness and peace.  
*Basses join Soprano staff*

95 **F** **A<sup>b</sup>** **Fm** **E<sup>b</sup>/D<sup>b</sup>** **D<sup>b</sup>** **E<sup>b</sup>/D<sup>b</sup>** **D<sup>b</sup>** / **A<sup>b</sup>** **A<sup>b</sup>** **D<sup>b</sup>/A<sup>b</sup>** **A<sup>b</sup>**

*decresc.*  
BARITONE SOLO  
Eat and drink, feed on the pre-sence of Je - sus, the Lord.

*decresc.*  
SOPRANOS & BASSES (8<sup>th</sup>)  
Eat and drink, feed on the pre-sence of Je - sus, the Lord.

*decresc.*  
ALTOS & TENORS  
Eat and drink, the pre-sence of Je - sus, the Lord.