

TRUMPETS

# DROP IT IN THE SLOT

1) "1 2 3 7"

Handwritten musical notation for measure 1, starting with a treble clef and a 4/4 time signature. The staff contains a whole rest followed by a quarter rest, then a half note chord with a flat (F) and a natural (C), and another quarter rest. Above the staff, there are handwritten notes: '1 2 3 7' and a circled 'A' above a flat sign. The measure ends with a double bar line.

9) "DROP IT"

Handwritten musical notation for measure 9, starting with a treble clef and a 4/4 time signature. The staff contains a quarter note chord with a sharp (F#) and a natural (C), followed by a quarter note chord with a sharp (F#) and a natural (C), and a quarter rest. Above the staff, there are handwritten notes: '9)' and 'DROP IT'.

Handwritten musical notation for measure 10, starting with a treble clef and a 4/4 time signature. The staff contains a quarter note chord with a sharp (F#) and a natural (C), followed by a quarter note chord with a sharp (F#) and a natural (C), and a quarter rest.

Handwritten musical notation for measure 11, starting with a treble clef and a 4/4 time signature. The staff contains a quarter note chord with a sharp (F#) and a natural (C), followed by a quarter note chord with a sharp (F#) and a natural (C), and a quarter rest.

23)

Handwritten musical notation for measure 23, starting with a treble clef and a 4/4 time signature. The staff contains a quarter note chord with a sharp (F#) and a natural (C), followed by a quarter note chord with a sharp (F#) and a natural (C), and a quarter rest.

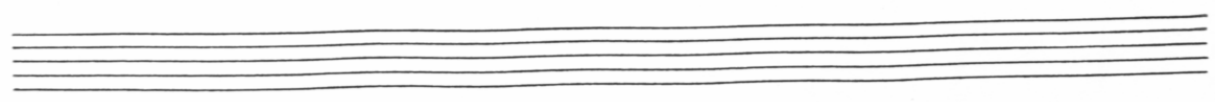
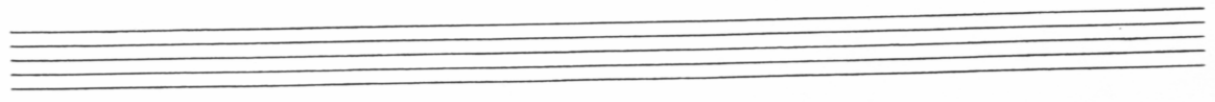
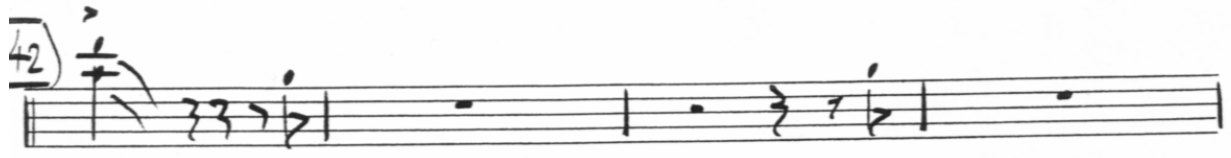
(1) (2)

Handwritten musical notation for measure 24, starting with a treble clef and a 4/4 time signature. The staff contains a quarter note chord with a sharp (F#) and a natural (C), followed by a quarter note chord with a sharp (F#) and a natural (C), and a quarter rest. Above the staff, there are handwritten notes: '(1)' and '(2)'.

34)

Handwritten musical notation for measure 34, starting with a treble clef and a 4/4 time signature. The staff contains a quarter note chord with a sharp (F#) and a natural (C), followed by a quarter note chord with a sharp (F#) and a natural (C), and a quarter rest. Above the staff, there are handwritten notes: '34)' and 'b-o-t'.

DROP IT IN THE SLOT - TRUPTS PL. 2



ENORS

# DROP IT IN THE SLOT

6) 1 2 3 4

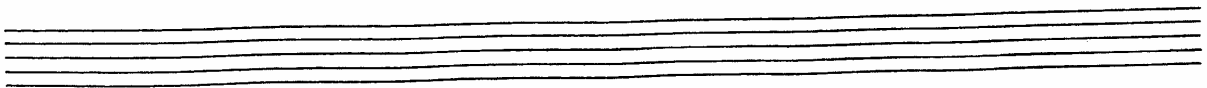
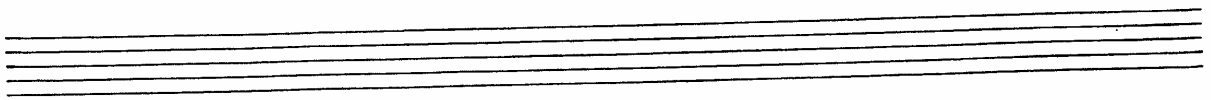
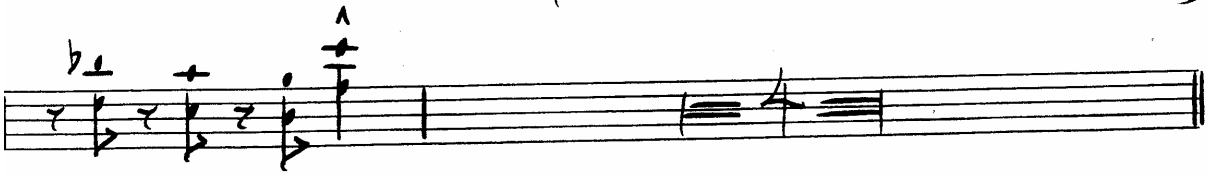
9) "DROP IT"

23) (2) (4) (6)

(1) (2)

24)

( DROP IT IN THE SLOT - TENSORS Pt. 2 )



ALTO

# DROP IT IN THE SLOT

8)

1 2 3 4

9)

"DROP IT"

23)

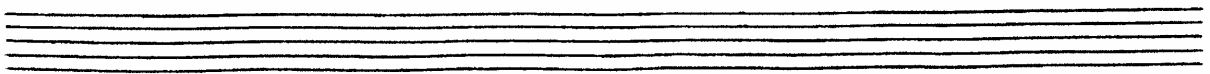
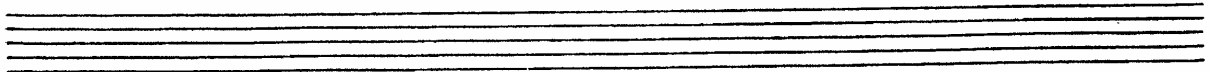
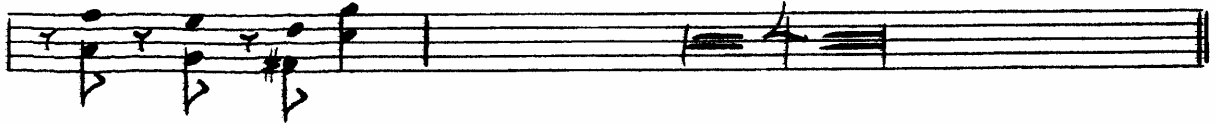
(2) (4) (6) (6)

(1) (2)

34)

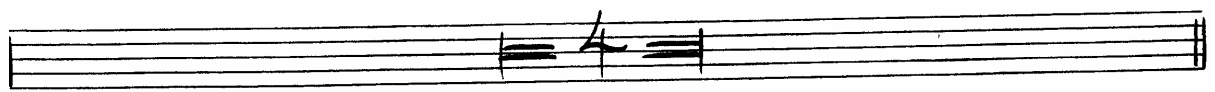
DROP IT IN THE SLOT - ALTO S.P. 2

A







DROP IT IN THE SLOT - BARI R. 2



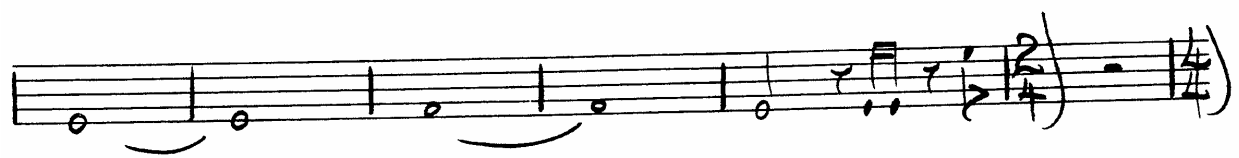
A musical staff with a 4/4 time signature, consisting of five horizontal lines.



A musical staff with a treble clef and a C-clef. It contains a melodic line with eighth and sixteenth notes, including a triplet of eighth notes.



A musical staff with a treble clef and a C-clef. It contains a melodic line with eighth and sixteenth notes, including a triplet of eighth notes.



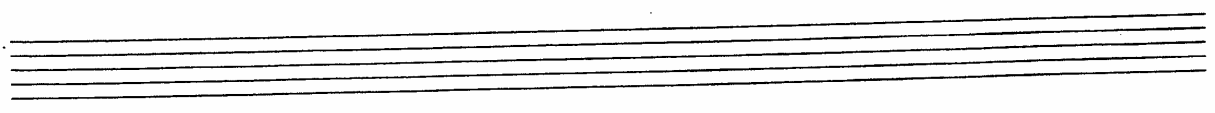
A musical staff with a treble clef and a C-clef. It contains a melodic line with eighth and sixteenth notes, including a triplet of eighth notes.



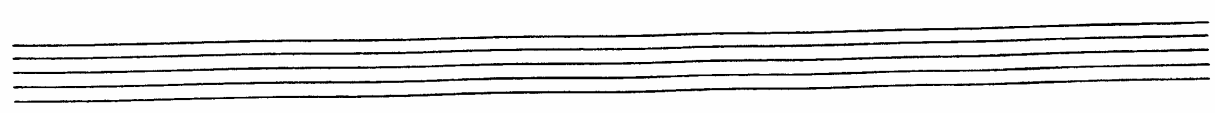
A musical staff with a treble clef and a C-clef. It contains a melodic line with eighth and sixteenth notes, including a triplet of eighth notes.



A musical staff with a treble clef and a C-clef. It contains a melodic line with eighth and sixteenth notes, including a triplet of eighth notes.



An empty musical staff with five horizontal lines.



An empty musical staff with five horizontal lines.



# DROP IT IN THE SLOT

Handwritten musical notation for measures 1-8. The system consists of two staves. The top staff is in treble clef with a key signature of one sharp (F#) and a 4/4 time signature. The bottom staff is in bass clef. Measure numbers 1, 2, 3, 4, 5, 6, 7, and 8 are indicated below the staves. The notation includes various chords, some with fingerings (e.g., 1, 2, 3, 4) and dynamic markings.

Handwritten musical notation for measures 9-14. The system consists of two staves. The top staff is in treble clef with a key signature of one sharp (F#) and a 2/4 time signature. The bottom staff is in bass clef. Measure numbers 9-10, 11, 12, 13, and 14 are indicated below the staves. The notation includes various chords, some with fingerings (e.g., 1, 2, 3, 4, 5) and dynamic markings.

Handwritten musical notation for measures 15-18. The system consists of two staves. The top staff is in treble clef with a key signature of one sharp (F#) and a 2/4 time signature. The bottom staff is in bass clef. Measure numbers 15, 16, 17, and 18 are indicated below the staves. The notation includes various chords, some with fingerings (e.g., 1, 2, 3, 4, 5) and dynamic markings.

Handwritten musical notation for measures 19-22. The system consists of two staves. The top staff is in treble clef with a key signature of one sharp (F#) and a 2/4 time signature. The bottom staff is in bass clef. Measure numbers 19, 20, 21, and 22 are indicated below the staves. The notation includes various chords, some with fingerings (e.g., 1, 2, 3, 4, 5) and dynamic markings.

Handwritten musical notation for measures 23-29. The system consists of two staves. The top staff is in treble clef with a key signature of one sharp (F#) and a 2/4 time signature. The bottom staff is in bass clef. Measure numbers 23, 24, 25, 26, 27, 28, and 29 are indicated below the staves. The notation includes various chords, some with fingerings (e.g., 1, 2, 3, 4, 5) and dynamic markings.

IN THE SLOT - R. 2

(1)

30 31 32 33

(4)

34 35 36

(42)

38-41 42 43 44 45

46 47 48 49 50 51

52 53 54 55 56 57

(SB)

IN THE SLOT - P. 2

(TEN 1 OUT)

8 5 60 61 62 63 64 65

66 68 69

6/96