

**MU 2990.01
Special Topics in Music
Techniques of Marching Percussion
Syllabus and Course Packet**

**Dr. Jason Baker
Assistant Professor of Music
Mississippi State University**

Spring 2010

Time and Location

Wednesdays 6-7 pm, Maroon Rehearsal Hall, Band/Choir Building

Grading

Based on attendance and participation. Students registered for the class will be allowed one unexcused absence for the semester. Subsequent absences will lower the student's final grade by one letter per occurrence. Any reason for an absence must be given to Dr. Baker (325-0390 / jbaker@colled.msstate.edu) within 24 hours of the absence in order for it to be considered as excused.

Materials

Students must download and print out the course packet and bring sticks/mallets, practice drum pad, earplugs, binder/sheet protectors and pencil.

Schedule

Week 1: Oktibbeha County Singles, Singles and Doubles, Accent-Tap
Week 2: 16th Accents, Double Stroke Roll Development,
Tap Roll Development
Week 3: Triplet Roll Timing, Roll Fulcrum Ex., Tap Roll Fulcrum Ex.
Week 4: 3 for 1, Paradiddle Builder, Paradiddles
Week 5: Herta Sequence, Flam Builder, Flam Variations
Week 6: Flam Drag Builder, Invert-A-Builder, Flam Variations
Week 7-12: Exercises and Music for 2010 Fall Drumline Audition

OKTIBBEHA COUNTY SINGLES

MISSISSIPPI STATE UNIVERSITY DRUMLINE

2006

BAKER

A

R R R R R R R R L L L L L L L L L R ...

4 L L L L L L L L R R R R R R R R R L ...

B

7 R R ... L L ... L R ... L L ... R R ... R L ...

C 4x

15 R R ... L L ... L R ... L L ... R R ... R L ...

D 4x

19 R R R L L L L R ... L L L R R R R L ...

E 4x

25 R R L L L R L R L L R R R L R L

F

27 R L L 0 1 0 0 1 0 1 1 0 1 0 0 1 0 1 1 0 1 0 0 1 0 1 1 0 1 0 0 1 0

Singles and Doubles

R R R R ... L L L L ... R R R R ...
 L L L L ... R R R R ... L L L L ...

5

R R R R ... L L L L ... R R R R ...
 L L L L ... R R R R ... L L L L ...

9

R L R L ... R R L L ... R L R L ... R R L L ... R

Accent/Tap

R R R R ... L L L L ...

5

R R R R ... L L L L ...

9

R R R R ... L L L L ...

13

R R R R ... L L L L ...

17

R R R ... L L L ...

21

R R R ... L L L ...

25

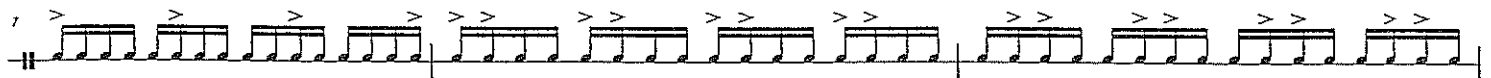
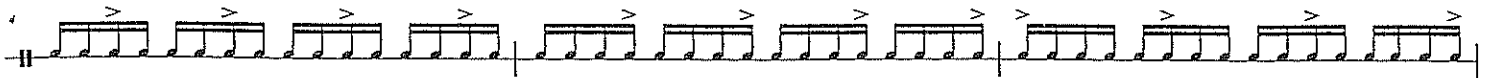
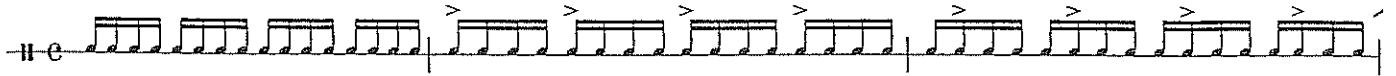
R R R ...
L L L ...

29

R R R ... L L L ... R

16th Accents

*practice with right and left lead
also, as tap drags, flams, flam drags, etc*



Open/Double Stroke Roll Development



R L R L R L R L R R L R R L R R L R R L

3



R L R L R L R L R L L R L L R L L R L L R L L

5



R L R L R L R L R R L L R R L L R R L L R R L L

7



R L L R R L L R L L R R L L R L L R R L L R L L R R L L

9



R L L R R L R L L R R L R L L R R L R L L R R L

11



R R L L R R L R R L L R R L R R L L R R L R R L L R R L

13



R R L L R R L L R R L L R R L L R R L L R R L L R R L L R

Tap Roll Development

R L R L R L R L R L R L R L R L R L L R L R L L R L R L L R L

5

R L R R L R L R R L R L R R L R L R R L R L L R R L L R L L R R L L R L L R R L L L R R L L

9

R L R L R L R L R L R L R L R L R L R L R L R L L R L R L R L R L R L L R L R L R L R L

13

R L R R L R L R L R L R R L R L R L R L R L L R R L L R R L L R R L L R R L L L R R L L

17

R L L R R L R R L L R L L R R L R R L L R L L R R L L R

Triplet Roll Timing

J. Baker
2009

The image displays six systems of musical notation for a drum set exercise. Each system consists of a musical staff with a treble clef and a 4/4 time signature. The music features a consistent rhythmic pattern of eighth notes, with groups of three notes (triplets) marked with a '6' above them. Below each staff is a sequence of 'R' and 'L' characters representing the hand used for each note. The systems are numbered 1 through 11 on the left side.

1
R L R R L L R R L R L L R R L L R L R L R R L L R R L L R R L L

3
R L R L R R L L R R L R L R L L R R L L R L R L R L R R L L R R L L R R L L

5
R R L L R R L L R R L L R R L L R R L L R R L L R R L L R R L L R R L L

7
R L R L L R R L R L R R L L R L R L R L R L L R R L R R L L

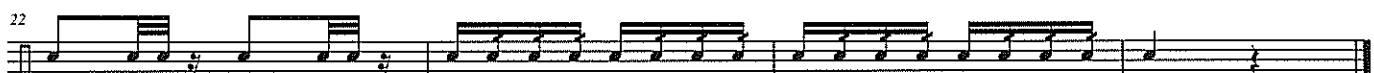
9
R L R L R L L R R L R L R L R R L L R L R L R L R L L R R L R R L L

11
R R L L R L L R R L L R R L L R R L L R R L L R R L L R R L L R R L L R

Roll-Fulcrum Exercise



R R R R ...
L L L L ...



Tap-Roll-Fulcrum Exercise

R R R R ...
L L L L ...

5

9

13

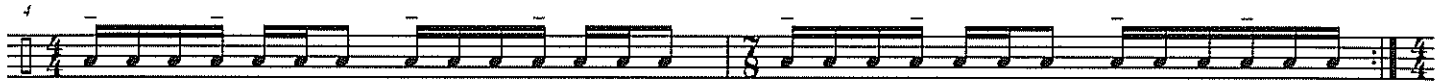
17

22

3 for 1



R R R L L L R R R L L L R R R L L L R R R L L L R R R L L L R R R L L L
L L L ...



R R R L L L R L L L R R R L R R R L L L R L L L R R R



R R R L R R R L R R R L R R R L L L R L L L R L L L R L L L R R R L R R R L R R R L R R R L L L R L L L R L L L R L L L



R R R L R L R R L L L R L R L L L R R R L R L R R L L L R L L L R R R L L L R R R L L L R R R L L L R R R L L L R

Paradiddle Builder


R L R R ::
L L L L ::

R L R R L L R L ::
L R L L R R ::

R R L L ::
R R L L L L ::
L R L L L R R ::

R L

Paradiddles




RLRRLRLL... RLRRLRLL... RRLRLLRL... RRLRLLRL...



RLRRLRLRLRLLRLRR LRLRLRLRLLRRLRLL RRLRRLRLRLLRLRR LRLRLLRLRRLRLL



RLRRLRLRLRLLRLRR LRRLRRLRRLRRLRLL RLLRLLRRLRRLRLL RLLRRLRRLRLLRRL



RLLRRLRRLRLLR RRLRRLRRLRRLRLLR

Herta Sequence



RRLRLRLRLRLRLRL RLRLRLRLRLRLRLRL RLRLRLRLRLRLRLRL RLRLRLRLRLRLRLRL



RRLRLRLRLRLRLRL RLRLRLRLRLRLRLRL RLLRLRLRLRLRLRL RLRLRLRLRLRLRLRL



RRLRLRLRLRLRLRL RLLRLRLRLRLRLRL RRLRLRLRLRLRLRL RLRLRLRLRLRLRLRL



RRLRLRLRLRLRLRL RLRLRLRLRLRLRLRL RLRLRLRLRLRLRLRL RLRLRLRLRLRLRLRL



RRLRLRLRLRLRLRL RLRLRLRLRLRLRLRL RLLRLRLRLRLRLRL RLRLRLRLRLRLRLRL



RRLRLRLRLRLRLRL RLLRLRLRLRLRLRL RLRLRLRLRLRLRL RLRLRLRLRL

Flam Builder

Single Flams

R L R L R L R L R L R L R L R L

Alternating Flams

5

R R R R R R R R L L L L L L L L R L R L R L R L R L R L R L

Flam Taps

9

R R R R R R R R R R L L L L L L L L L L R R L L R R L L R R L L R R L L R R L L R R L L

Flam Accents

13

R R R R R R R R R R R R L L L L L L L L L L R L R L R L R L R L R L R L R L R L R L

Pataflafias

19

R R R R R R R R R R R R L L L L L L L L L L R L R L R L R L R L R L R L R L

Inverted Flam Taps

22

R L R L R L R L R L R L R L R L R R R R R R R R R R L L L L L L L L L L

25

R L L R R L L R R L L R R L L R R L L R R L L R R L L R R L L R

Flam Drag Builder

R LLR L RRL R LLR L L RRL R

5

R LLR L RRL R LLR L RRL R LLR L RRL

8

R LLR L RRL R LLR L RRL R LLR L RRL R

12

R L R L R L R L R L RRL R LLR L RRL R LLR L

16

RRL R LLR L RRL R LLR L RRL R LLR L RRL R LLR L R

Invert-A-Builder

R L L R R L L R R L L L R R R L L L R R

5

R L L L R R R L L L R R R L L R R L L R R L L R R

10

R R L L R R L L R R L L R R L L L R

13

R R L L L R R R L L R R L L R R L L R R L L R

17

R R L L R R L L R R L L R R L R R L L R R L L R R L

21

R L L R R L L R R L L R R L L R R L L R R L L R R L L

Flam Variations

arr. Baker

Single Flams

Musical notation for Single Flams, consisting of a single staff with rhythmic notation and accents.

R L R L R L R L R L R L R L R L R L R L R L R L R L R L R L R L

Flam Taps

Musical notation for Flam Taps, consisting of a single staff with rhythmic notation and accents.

R L R L R L R R L L R L R L R L R R L L R L R L R L R L R L R L R L R L R L

Painfluffas

Musical notation for Painfluffas, consisting of a single staff with rhythmic notation and accents.

R L R L R L R L R L R L R L R L R L R L R L R L R L R L R L R L R L R L R L

Flam Paradiddle

Musical notation for Flam Paradiddle, consisting of a single staff with rhythmic notation and accents.

R L R L R L R L R R L R L R L R L R L L R L R L R L R L R L R L R L R L R L

Windmills

Musical notation for Windmills, consisting of a single staff with rhythmic notation and accents.

R L R L R L R R L R L R L R L R L R L R L R L R L R L R L R L R L R L R L

Single Hand Patrys

Musical notation for Single Hand Patrys, consisting of a single staff with rhythmic notation and accents.

R L R L R L R R L R L R L R L R L R L R L R L R L R L R L R L R L R L R L

Flam Drags

Musical notation for Flam Drags, consisting of a single staff with rhythmic notation and accents.

R L R L R L R L R L R L R L R L R L R L R L R L R L R L R L R L R L R L R L

Cheeses

Musical notation for Cheeses, consisting of a single staff with rhythmic notation and accents.

R L R L R L R L R L R L R L R L R L R L R L R L R L R L R L R L R L R L R L

Flam 5's

Musical notation for Flam 5's, consisting of a single staff with rhythmic notation and accents.

R L R L R L R L R L R L R L R L R L R L R L R L R L R L R L R L R L R L R L

Inverts

Musical notation for Inverts, consisting of a single staff with rhythmic notation and accents.

R L R L R L R L R R R L R L R L R L R L R L R L R L R L R L R L R L R L R L

Cheese Inverts

Musical notation for Cheese Inverts, consisting of a single staff with rhythmic notation and accents.

R L R L R L R L R R R L R L R L R L R L R L R L R L R L R L R L R L R L R L